

LIGNOCAM

BTL VIEWER / EDITOR / WOODPECKER

Thank you for your interest in our products. You will find bellow an overview and a description of the BTL-tools which are developped by Lignocam: the BTL-Viewer, Editor and the Woodpecker. Thew are followed by the conditions of saling and the order form.
Do not hesitate to ask if you still have questions.

1. Overview

The following table gives you an overview of the Lignocam products which facilitate you the managing of BTL-file. These software are independent of the CNC-Machine you use.

	<u>BTL Viewer</u>	<u>BTL Editor</u>	<u>WoodPecker</u>
Multilingual (EN, DE, FR, IT, SP, RU, CZ)	X	X	X
Visualising BTL-file (version 10.0 to 10.6)	X	X	X
Checking BTL-file compliance	X	X	X
Editing Parts and Processings	X	X	X
Adding/Deleting Parts and Processings	X	X	X
Creating Nesting (Rawpart)	X	X	X
Saving a BTL-file in Version 10.6		X	X
Splitting house in several walls		X	
Converter RHINO/GRASSHOPER to BTL-file			X
090 Planing: split multilateral planning into individual CF's.		X	
040 Drilling: copy drilling to opposite reference side		X	
Outline: convert PROCESS=No to PROCESS=YES		X	
037 Block House Half Lap 037: convert into Lap Joint 030		X	
030 Lap Joint with P13>0: convert into Lap Joint+ Bird mouth 020		X	

011 Double cut: convert convex 011 into 2 cuts		X	
104: round arch: convert round arch into contour 250		X	
039: pocket: convert pocket into lap joint 030		X	
	FREE	400 €	200 €

[SOFTWARE / HARDWARE CONFIGURATION](#) 9

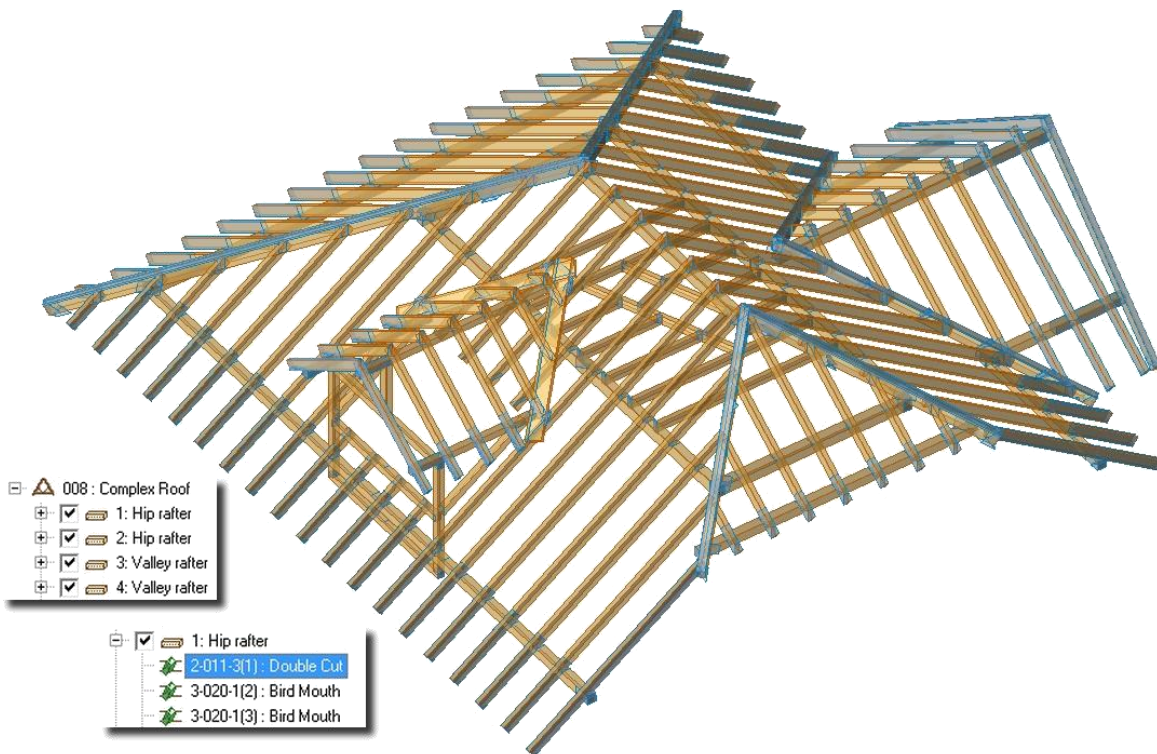
[HOTLINE](#) 9

[ORDER FORM](#)

2. BTL-Viewer

The **BTL-viewer** is developed by Lignocam and offered for free to the users on the internet page of <http://design2machine.com/btl/viewer.html>. There you find also the description of the BTL format as PDF file.

After downloading, use the BTL-files samples to visualize the whole project as example:



[HOME](#)

[ORDER FORM](#)

3. BTL- Editor

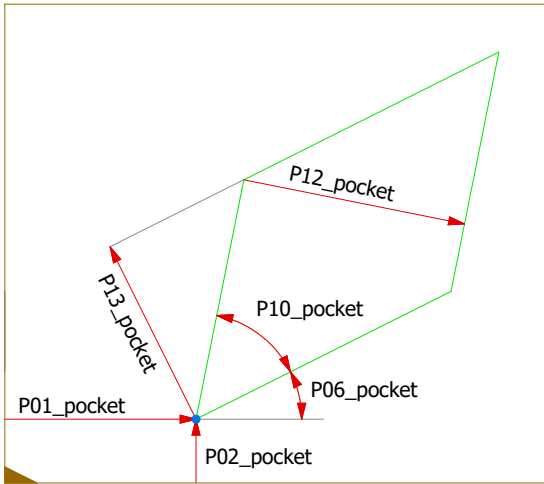
The **BTL-Editor** is the BTL-viewer with possibilities to save a BTL-file and to convert some processing into other. The file is saved in the **last Version BTL 10.6**.

Function/Spécifications	comments
Multilingual (EN, DE, FR, IT, SP, RU, CZ)	Coming soon : chinese.
Visualising BTL-file (version 10.0 to 10.6)	Project, Parts and Processings. PREFABRICATION is included.
Checking BTL-file compliance	Check the compliance of the BTL-file, replace the wrong values if possible and return a txt report.
Editing Parts and Processings	Most of the parameter can be modified and saved as a BTL-file 10.6.
Adding/Deleting Parts and Processings	Free to add a part and/or an individual processing.
Creating Nesting (Rawpart)	Create a Nesting (RAWPART) of parts or panels. PREFABRICATION is also done with RAWPART.
Splitting house in several walls	A BTL-file with Index PREFABRICATION contains a house with 4 walls described with Rawparts. The splitting option will create 4 BTL-files for the 4 walls of this house.
Saving a BTL-file	Save the project and the modification as a BTL-file 10.6

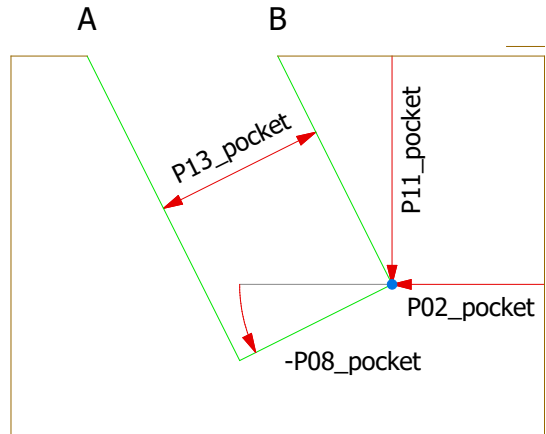
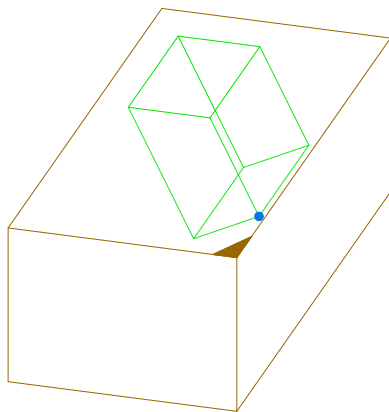
Processkey	Designation	Feature description	Input/output		Conditions, remarks
			Input	Output	
090	Planing	dissolve multilateral planing into individual CF's.	4-090-1: P04=15	4-090-1: P04=1 4-090-1: P04=2 4-090-1: P04=4 4-090-1: P04=8	
040	Drilling	copy drilling to other reference side.	4-040-3	4-040-1	
Outline	Outline	Attribut PROCESS=YES.	PROCESS=NO	PROCESS=YES	
037	Block house half lap	convert block house into lap joint.	4-037-1	4-030-1 4-030-2 4-030-3 4-030-4	P16=P17=P18 must be = 0
030	Lap joint	convert lap-joint into lap-joint + bird mouth	3/4-030-1: P13 > 0	3/4-030-1: P13=0 3/4-020-1	Only available fi P13 > 0
011	Double cut	convert double cut convex into 2 cuts.	1-011-1	1-010-1 1-010-1	
104	Round Arch	convert round arch into contour	4-104-1	4-0250-1	
039	Pocket	convert pocket into lap-joint	4-039-4	4-030-4	Refer to the conditions below

Conditions to convert Pocket to Lap Joint

Pocket (P07=0, P08=0) -> Lap Joint: **Pocket Parameters P07 must = 0 and P08 must = 0.**



Pocket (P06=0, P07=0) -> Lap Joint: **Pocket Parameters P06 must = 0 and P07 must = 0 and P10 must = 90.** The points A and B of the pocket must be inside of the reference-side.



PS: You need something else? Do not hesitate to ask! We are interested in developing the convert options.

4. Woodpecker



Woodpecker is a plug-in for Grasshopper that enables users to extend their parametric models seamlessly into fabrication. It offers a number of GH components that can turn input geometry into fabrication data in **BTL** format.

Function/Spécifications	comments
Multilingual (EN, DE, FR, IT, SP, RU, CZ)	Coming soon : chinese.
Visualising BTL-file (version 10.0 to 10.6)	Project, Parts and Processings. PREFABRICATION is included.
Checking BTL-file compliance	Check the compliance of the BTL-file, replace the wrong values if possible and return a txt report.
Editing Parts and Processings	Most of the parameter can be modified and saved as a BTL-file 10.6.
Adding/Deleting Parts and Processings	Free to add a part and/or an individual processing.
Creating Nesting (Rawpart)	Create a Nesting (RAWPART) of parts or panels. PREFABRICATION is also done with RAWPART.
Saving a BTL-file	Save the project and the modification as a BTL-file 10.6
Converter RHINO/GRASSHOPER to BTL-file	The following Processing and Attributs can be turn into BTL:
Project	
Part	Includes OUTLINE and APERTURE
Cut	Processing 010
Slot	Processing 016
Pocket	Processing 039
Drilling	Processing 040
Triangle cut	Processing 120
Contour	Processing 250. Includes ASSOCIATED CONTOUR

- Software download on www.lignocam.com.
- Hotline (see below).
- Updates on www.design2machine.com
- Upgrades not included.

PS: trial version 10 days is available

[HOME](#)[ORDER FORM](#)

5. Software / Hardware configuration

Software / Hardware	Specification	Remarks
Operating system (OS)	PC with minimum windows 7.	All OS must have the last service pack and updates.
Other Sftware	MSXML v4.0 SP2 or newest	Can be downloaded free by Microsoft.
	Team-viewer	Included.
Graphics card	ATI -> FireGL or Nvidia ->series QuadroFX.	To be sure of the compatibility, please check your graphics card by : http://developer.techsoft3d.com/hoops/hoops-visualize/graphics-cards/

[HOME](#)[ORDER FORM](#)

6. Hotline

By e-mail or phone.

Office opening hours, Monday-Friday: 08:00-12:00/13:30-17:00 European time (Bern).

Phone: +41 21 943 71 05 / +41 21 943 71 06

e-mail: hotline-fr@lignocam.com

[HOME](#)[ORDER FORM](#)